

CMA... The Next Level

A Publication of the Denver-Centennial Chapter #410

Volume 10, Issue 9



The Association for
Accountants and
Financial Professionals
in Business

President's Letter

*October Monthly
Dinner*

*Wednesday
Oct 20, 2010*

5:30 pm

*Holiday Inn Select
455 S. Colorado Blvd
Denver*

*RSVP to Orland
By 5:00 p.m. Oct 17
o.varela@comcast.net
(303) 520-7715*

Please See Pages

One of my most important roles of the Chapter Broad of Directors is to put together the chapter's meetings and educational opportunities. Our goal is to provide low cost educational opportunities on relevant topics and provide members the opportunity to network with others in the profession. If you have not attended a dinner meeting recently I hope you take the opportunity to attend our October meeting and benefit from the hard work the Chapter Director of Speakers, Joe Dryden, puts into the organization of these events. If you have any input or would like to recommend a speaker/topic/event, please contact us.

Please note the following events to be held in October:

14 October – Facility tour of Children's Hospital.

20 October – Monthly Dinner

More detailed information on this and other events will follow.

It is always important, but even more so in a recession to differentiate yourself from the crowd and stay current. Job demand is slim and the supply of resources is increasing. Job competition is fierce as numerous talented and experienced people are on the market today. The CMA certification can set you apart from the crowd. I encourage those of you that do not have the CMA certification to study and pass the exam. Even if you don't yet have the CMA, showing a prospective employer that you are studying for the exam may set you apart from others. There are resources at your disposal to help you study and pass the exam. The National IMA has study materials online that can be purchased for a discount. The IMA LinkUp site has online study groups. These are just a few of the resources. If you are interested in more information, please reach out to Mike Westcott, our CMA Development Director. His contact information is included in this newsletter.

I feel fortunate to be working with such talented and dedicated people on the board. Thank you Denver Centennial IMA Board members for your dedication and contributions! I look forward to seeing and talking with you at an upcoming chapter event!

Kind regards and best wishes,

Orland Varela
2010-2011 President

Denver-Centennial Chapter of the IMA

DENVER-CENTENNIAL CHAPTER SERVICE YEAR 2010-2011

OFFICERS AND DIRECTORS

President	Orland Varela
President-Elect	Cory Peters
Secretary	Tracy Weiman
Treasurer	Christopher Miller
Asst Speaker Coordinator	Open
CMA Corporate Promo	Mike Handy
CMA Development	Mike Westcott
Calling Committee Chairperson	Open
Corporate Marketing Development	Open
Database and Evite Administrator	Drew Ostrem
Director of Speakers	Joe Dryden
Director of Statistic, Metrics & Analysis	Joan Montgomery
Director of Young Professionals	Open
Employment	Larry Hall
Front Desk Lead	Mike Cima
Front Desk Person	Open
Guest and New Member Outreach	Steve Wallingford
Newsletter Editor	Connie Spinelli
Raffle Coordinator	Alena Peretsky
Roster Editor	David Gnuse
Special Educational Events (plant tours, workshops)	Nina Ramos
Student Ambassador	Cory Peters
Student Night Chairperson	Letitia Meier-Pleis
Student Night Co-Chairperson	Cory Peters
Tax Administrator	Kathy Rinkel
VP of Education	Open
VP of Membership	Katie Essman
Webmaster	Andrew Vara
Past Presidents:	
Kristen Muzzy	2009-2010
Kathleen Rinkel	2008-2009
Linda Hendrix	2007-2008
Mike Westcott	2006-2007

If you have interest in becoming involved or serving on the Board of Directors, please contact Orland Varela at o.varela@comcast.net .

Wednesday, October 20th, 2010 - Dinner Meeting

“Writing Effective E-mails”

1 hour CPE qualified

Focus: Effective writing covers e-mails, letters, proposals, notes, briefs and anything that puts your fingers to the keyboard or pen in hand. We write 60 percent more now than 10 years ago because of e-mail and yet we haven't really gotten any better!

How many e-mails do you write per day? Receive? How many do you write well?
Do you ever receive a document and cringe because it's poorly written? Most assuredly.

My presentation on Effective E-mail Writing will focus on refreshing your knowledge of writing techniques and tools. The information is designed to help you remember the basics and begin to reuse them; getting you to write so your readers can “see” and understand your points.

Presented by: Dee Dukehart, executive business communications consultant and trainer. Dee combines her marketing and professional speaking background with her writing expertise to train and enhance employees' written documents and spoken words, and to coach executives in organizing, creating and delivering impressive, memorable and powerful presentations.

She's been a professional speaker, communication's trainer and presentation skills coach for over 10 years. Dee's an active member of the National Speakers Association and the Colorado Chapter – a board member in 1998-2000, 2006; a member of the American Society of Training and Development, The Alliance of Professional Women, and 24-Hour Fitness.

Her articles appear in diverse publications from “Leadership Strategies,” to “Denver/Boulder Better Business Bureau,” to “Surgical Services Management.”

5:30 – Registration and Social hour
6:30 - Dinner
7:00 - Announcements
7:15 - Speaker
8:30 - Raffle and Closing Commentary

Holiday Inn Select
455 South Colorado Blvd
Denver, CO 80246
[Google Map Link](#)

\$35 - Members/Non-Members with reservations
\$40 - Members/Non-Members without reservations
\$25 - Students (please bring your student ID)

*Please note: you will be considered 'registered' by responding 'Yes' by 5 PM on **Sunday, October 17th.** --To cancel and avoid being billed, please e-mail Orland Varela 48 hours in advance at o.varela@comcast.net (preferred) or call and leave a message on (303) 520-7715 to avoid being billed.*

Please RSVP with meal selection which will be a choice of:

ARTICHOKE CHICKEN

Boneless Chicken Breast Sautéed with a White Wine Reduction Mushrooms and Artichokes

or

VEGETARIAN LASAGNA

Fresh pasta layered with spinach and seasonal Italian vegetables

With a rich cheese blended sauce



Reserve the Dates for.....

Upcoming IMA Dinner Meetings:

- October 20th, 2010
- November 12th, 2010 – **Breakfast Meeting**
- December – No meeting, board appreciation dinner
- January – No meeting due to local chapter social event
- February – No meeting due to student night event February 25th, 2011
- March 23rd, 2011
- April 20th, 2011
- May 18th, 2011
- June 15th, 2011
- July 20th, 2011

Upcoming Board Meetings:

All are welcome!

Tivoli Student Union – MSCD Campus room 542 at 6:00 pm

- October 27th, 2010
- November/December - December 1st, 2010
- January 26th, 2011
- February 23rd, 2011
- March 30th, 2011
- April 27th, 2011
- May 25th, 2011
- June 22nd, 2011
- July 27th, 2011

Evaluating and Hiring Recent Graduates

Evaluating job candidates is never an easy task. The assessment process is particularly challenging when your finalists are recent college graduates with little or no work history. To help you more accurately compare entry-level applicants, we offer the following areas to examine, questions to ask and potential red flags to watch out for:

Academic Performance

While the grade-point average of someone with an extensive work history is essentially irrelevant, the same is not true for recent graduates. High marks in college don't ensure professional success, but it's safe to assume a student who earned straight A's has the ability to set priorities, meet deadlines and exceed expectations. And while mediocre students can end up being fantastic employees, it's wise to inquire about their lackluster grades. Their explanation can give clues about their work ethic and attitude.

Polish and Professionalism

You can't expect job-interview novices to display perfect polish, but certain things they do — or do not do — on interview day can provide considerable insight into their potential performance. Did the candidate arrive promptly, dress appropriately and display proper etiquette? Was the interviewee friendly and courteous to everyone he or she encountered within your organization — or only to you and other perceived decision-makers? Did the candidate ask informed questions and seem genuinely interested in the position?

References

Recent college graduates may not have the professional testimonials of more experienced candidates, but checking their references is still an important step in the hiring process. A professor, internship supervisor or mentor can provide you with helpful information about not only the job seeker's technical skills, but also his or her resourcefulness, drive and personality. After speaking with the references, compare their feedback with the picture the applicant painted. Do they match up?

Extracurricular Activities

Did applicants give evidence that they have taken steps to expand their skills and broaden their knowledge outside the classroom? For example, were they active members of accounting organizations? Did they pursue internships and volunteer opportunities, and take advantage of alumni mentoring programs? Look for candidates who've shown initiative and possess a passion for the industry.

Kellie Burton
District Public Relations Manager
Robert Half International
6300 South Syracuse Way, Suite 700
Englewood, CO 80111
(720) 488-2794 Phone
(720) 488-2846 Fax
kellie.burton@rhi.com



Denver-Centennial IMA Chapter Networking Group

The Denver-Centennial IMA Chapter is sponsoring a monthly morning networking event the second Tuesday of each month

This event is open to all members and is intended to assist our members in networking for employment opportunities. Sessions will include topics on job search techniques, resume writing, interviewing skills, job board utilization, mentoring, recruiter introductions and other topics.

The IMA October 12th Networking meeting will have Katie Essman of Robert Half International sharing "Global Financial Employment Monitoring".

The November 9th Networking meeting will have Steve Wallingford of Tradewinds Solution sharing "Finding and Connecting with Decision Makers".

A yahoo group has been established for job postings and relevant discussions. Please send an e-mail requesting to join the group at denvercentennialima@yahoogroups.com.

If you are interested in leading a North Denver networking group, or have questions please contact Cory Peters at cory.w.peters@hotmail.com.

Month: October and November
Date: 2nd Tuesday each month
Time: 9:00 - 10:30 AM
Location: Robert Half International
Address: 6300 S. Syracuse Pkwy, Suite 700
Englewood, CO 80111

Work as we know it has changed...so what are you doing to adapt?



In today's fast-paced and competitive business environment, you are no longer judged for your loyalty and seniority but by the success of your last project. . . By achieving notable results on projects you position yourself as a valuable asset.

—Project Management Institute (PMI®)

If you are a leader in business, ministry, or the military, CCU's accredited **CERTIFICATE IN PROJECT MANAGEMENT** can help you achieve your goals.

Attend class one night a week in Northglenn, Lakewood, or Denver Tech Center...or you can earn your **certificate entirely online!**

Colorado Christian
UNIVERSITY
College of Adult and Graduate Studies

CALL TODAY!

CLASSES FORMING NOW! (Previous credits accepted)
800.443.3886 | www.ccu.edu/project

Who wants to get CMA certified? **CMA STUDY GROUPS**

Study groups are a very effective way to help candidates pass the Parts of the CMA exam and become CMA certified. Some chapter members have expressed interest in creating study groups for Part 1 & 2. The testing window is open in January and February for Parts 1, 2, & 3.

The chapter's CMA Development team continues to organize Study Groups.

Anyone interested should email chapter CMA Development Mike Westcott (mgwestcott@yahoo.com) to express interest – please specify the Part you are interested in, indicate the preferred time and share which section of town (South - North) you would prefer for the study group. This will help narrow down groups and try to work with everyone interested.

1/2

Cut your financial job search time in half.

At Accountemps, we're here to help find you work faster. How do we do that? By speaking with over 90,000 hiring managers every week to quickly find you the best assignments in your local area.

So why not meet us halfway? Visit our website, or call us today.

Denver - Lakewood - Englewood - Aurora

1.800.803.8367 - accountemps.com



Accountemps A Robert Half Company

© 2007 Accountemps. An Equal Opportunity Employer. 1005-1005.a

Plant Tour!

Please join the IMA Denver-Centennial Chapter for a 'plant tour' of the beautiful Children's Hospital on the Anschutz Medical Campus in Aurora

On

Thursday October 14, 2010

4:00 – 6:00 p.m.

Agenda

4:00 Meet at the Lobby – Information Desk

4:00 – 5:00 p.m. Tour of the Hospital

5:00 – 6:00 p.m. Finance and Accounting Presentation by
Carlo Rotolla, Controller

RSVP to: Nina Ramos-Trapp, IMA Director of Special Education

Email: nina_amos_trapp@msn.com

Mobile: 720.260.2400

The Children's Hospital at I-225 and Colfax is the only dedicated Level 1 trauma center in our 7 state region; handling the most challenging emergencies.

*The Children's Hospital
Anschutz Medical Campus
13123 East 16th Avenue
Aurora, CO 80045
Tel. (720) 777.1234*

Website: <http://www.thechildrenshospital.org/about/index.aspx>

Directions:

<http://www.mapquest.com/maps?name=Children's+Hospital&city=Aurora&state=CO&address=13123+E+16th+Ave&zipcode=80045&country=US&latitude=39.740821&longitude=-104.836025&geocode=ADDRESS&id=262133918>

On November 24, 2009, ICMA announced a change to the format and curriculum of the CMA exam program. Beginning May 1, 2010, the CMA exam will consist of a two-part format focusing on the critical skills of financial planning, analysis, control and decision support. Testing for the current four-part CMA exam format will continue through December 31, 2010. [Read more](#)

The current 4-Part CMA exam:

- July: No exam parts offered
- August: Part 4 only
- September and October: Parts 1, 2, and 3
- November: No exam parts offered
- December: Part 4 only

The exam procedures, schedule and locations are located at: [IMA Certification Information](#)
Additional information can be obtained by contacting Mike Westcott CMA Development - mgwestcott@yahoo.com.

The new 2-Part CMA exam:

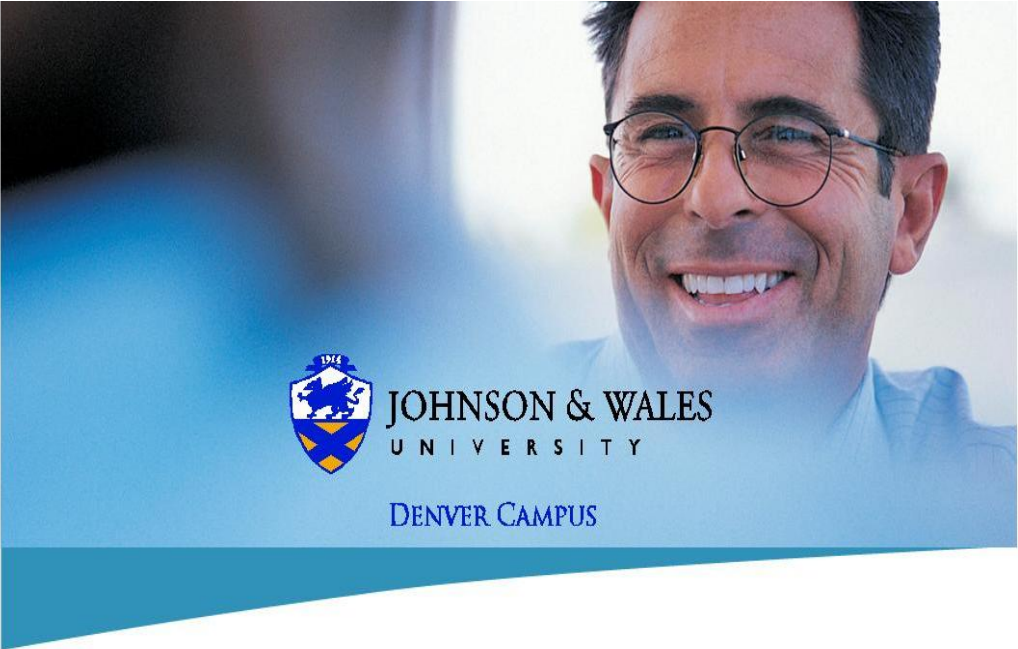
ICMA is now accepting registrations for Parts 1 and 2 of the new two-part CMA® exam program and the Transition Exam Part T. [Read more](#)

The CMA examination is given in a computer-based format. The exams are offered at an extensive network of Prometric Testing Centers located throughout the U.S. and Internationally. In the U.S. the exams are offered daily during the testing months except Sundays and Holidays. Internationally, exam centers are available according to local customs. An up-to-date listing of all Prometric Testing Centers can be found at Prometric's website www.prometric.com/ICMA.

Parts 1 and 2 will be given during the following three testing window periods:

- January and February
- May and June
- September and October

Additional information is available in the CMA Handbook: [CMA Handbook 2010 Final](#).



JOHNSON & WALES
UNIVERSITY

DENVER CAMPUS

**CERTIFIED MANAGEMENT ACCOUNTANT
REVIEW PROGRAM**



About the Program: This JWU program is offered in cooperation with the Institute of Management Accountants (IMA®). Students will be

provided with the state-of-art *CMA Learning System™* developed by the IMA and based on the latest CMA body of knowledge. Instructors are JWU College of Business faculty.

Class Schedule:

Pending – please check the Johnson & Wales website:

<http://www.jwu.edu/content.aspx?id=17916>

Program Overview: CMA Exam Part 1

Business Analysis

- Business Economics
- Global Business
- Internal Controls
- Quantitative Methods
- Financial Statement Analysis

Registration & Fees

We encourage participants to complete their registration and payment process as early as possible to reserve space. Early registration by March 31st. Deadline is April 20th.

Course Costs: \$895 per part, IMA Members
\$995 per part, Non IMA Members

Course costs include all review materials

Please call or email for additional information



David Dirks

Johnson & Wales University
College of Business
7150 Montview Blvd.
Denver, CO 80220
303. 256. 9503
DDirks@jwu.edu

Name: _____ Phone: _____

Company: _____

Address: _____ Email: _____

Payment Options : Amount: \$ _____

Check Check # _____

Course: CMA Exam Review Part I

Credit Card Type: MC VISA AMEX Discover

Credit Card Number : _____

Expiration Date: __ / __

Denver Centennial Chapter Supports CMA Exam Format Changes

With Global IMA's announcement of the change from 4 to 2 parts - how does this impact the Denver Centennial Chapter's efforts to support members with certification? NO CHANGE.

The Denver Centennial Chapter of the IMA continues it's commitment to help chapter members with their pursuit of attaining their CMA certification thru the following:

- Coordinating study groups
- Accepting and loaning donated study materials to the Chapter Study Book Resource Library
- Continuing to award money for students testing while a student (3 students have passed a part so far this IMA year)

We are very interested in feedback from the membership with regard to the exam format changes. As usual feel free to email Mike Westcott - CMA Development Director with any questions you may have about the certification, study materials, and or the exam - mgwestcott@yahoo.com.

As usual - it is very helpful for the chapter to know who is considering taking the exam or is in the process of testing the exam parts. If you fit into either category - please email Mike Westcott - mgwestcott@yahoo.com. Only upon passing the final CMA part will Global IMA inform the chapter of members who tested - please do not assume we get notice when people start the process.

News from IMA National

- ✓ The Institute of Management Accountants held its 91st annual conference and Exposition June 5th – 9th in Baltimore Maryland. The theme for the event was to “Be Inspired”. They offered Business Leader Keynote Sessions and Concurrent Sessions for CPE credits. The Business Leader Keynote focused on discussing topics relevant to you, your career and your organization while the Concurrent Session offered presentations from industry professional on topical areas focused on driving business performance.

International Financial Reporting Standards and Business Ethics were key topics presented. Aaron Beam, Former CFO of HealthSouth Corporation discussed how he got caught on “The Wagon to Disaster” and Marianne Jennings, Professor of Legal and Ethical Studies, Arizona State University discussed “How We Lose Our Way: The Gradual Slippage from “It’s a Gray Area” to “What Were We Thinking”. The link below show highlights of the events.

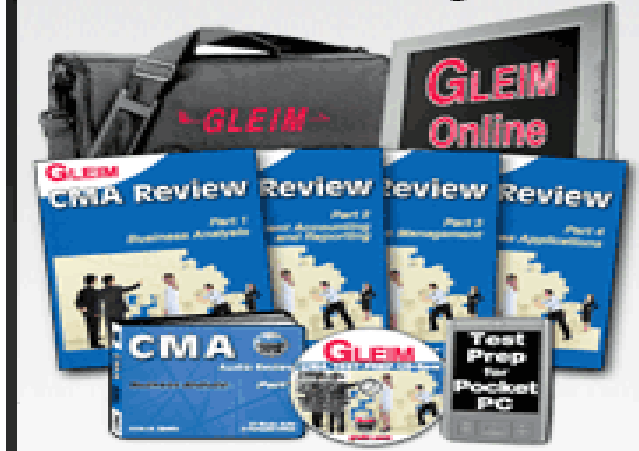
<http://www.youtube.com/watch?v=u7yOe5r5vag>

- ✓ IMA Announces 2010-2011 Chair-Elect: IMA is pleased to announce Brian L. McGuire, Ph.D., CMA, CPA, CBM, CTP as Chair-Elect for IMA’s fiscal 2010-2011 period (July 1, 2010 to June 30, 2011). [Read more](#)
- ✓ IMA’s 11th Annual Student Leadership Conference, Anaheim, CA, November 4-6, 2010

For additional information go to www.imanet.org; you will find a treasure trove of useful and interesting information on the IMA National website.



CMA Review System



ATTENTION: Your chapter leadership has entered into an agreement with GLEIM for special discounts to chapter members.

All Four Exam Parts

Complete System (book, CD-ROM, audio CDs, Gleim Online): \$503.17 (32% discount)
CMA Gleim Online: \$314.88 (30% discount)
Book and Test Prep CD-ROM: \$243.04 (20% discount)

Single Exam Part

Complete System (book, CD-ROM, audio CDs, Gleim Online): \$149.77 per part (30% discount)
CMA Gleim Online: \$87.47 per part (30% discount)
Book and Test Prep CD-ROM: \$60.76 per part (20% discount)

Administrative Items

- ✓ *Important Reminder: Keep your IMA profile updated for news from the IMA and the Denver-Centennial Chapter. We use the mailing addresses and email addresses to keep you informed of upcoming events and important IMA news. Profile located on IMA Website.*

- ✓ *Submission Deadline info for next newsletter is Monday, October 25
Please email your information to Connie Spinelli at connie_spinelli@msn.com.*